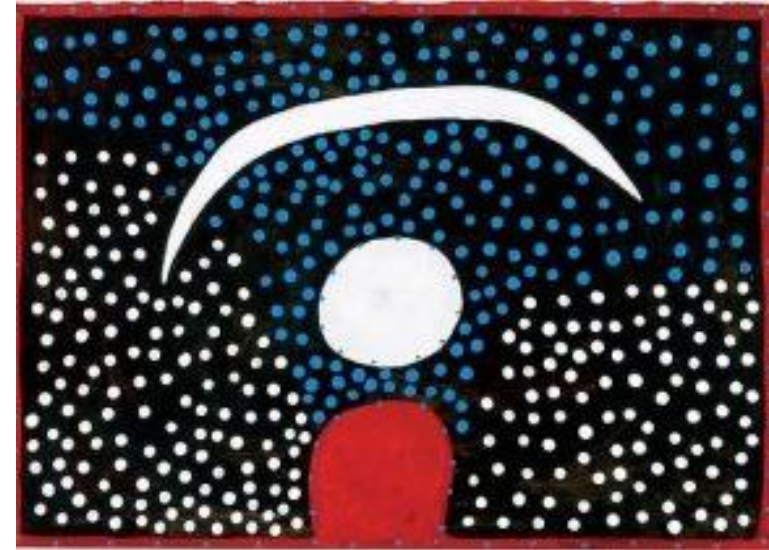
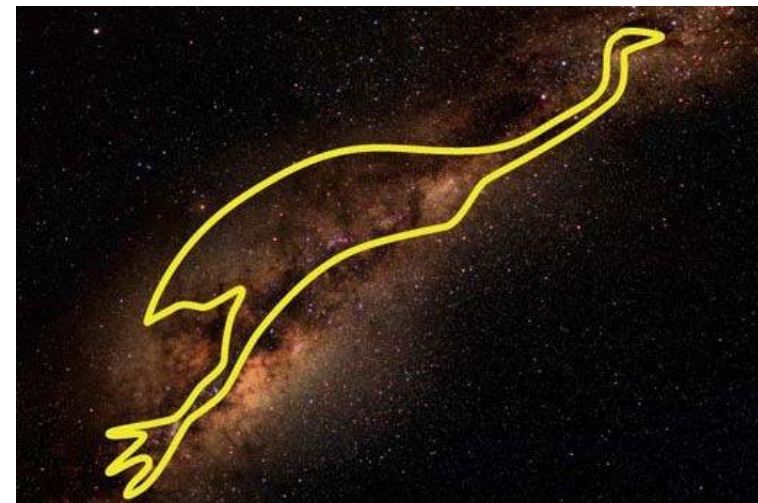


Did you know?

- The **Yolngu people**, in north eastern Arnhem Land in the Northern Territory, recognised how the tides are linked to the phases of the moon before Italian scientist Galileo Galilei.
- Aboriginal people had figured out how eclipses work, and knew how the planets moved differently from the stars to regulate the cycles of travel from one place to another, maximising the availability of seasonal foods.
- Aboriginal people had sophisticated number systems, knew bush medicine, and navigated using stars and oral maps to support flourishing trade routes across the country.



Ngarra, Larrkardi, 2005, synthetic polymer paint on paper.



Tchingal is the emu that can be seen in the Milky Way.